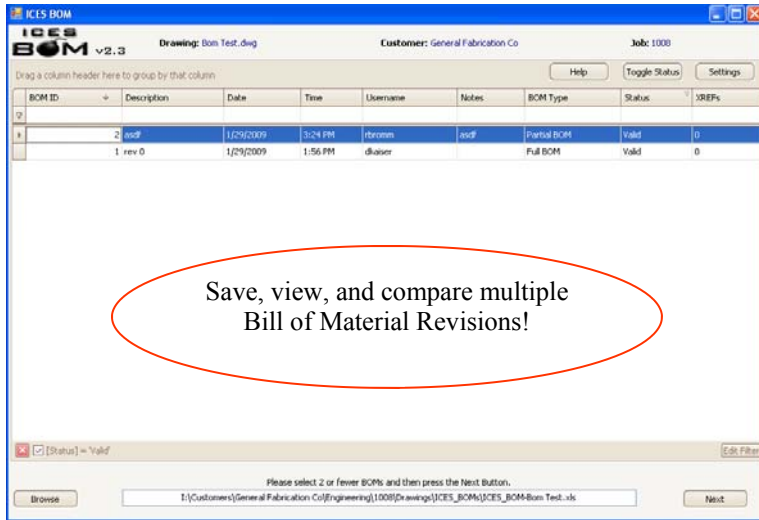




ICES BOM provides template based Bill of Material tracking with version comparison in the form of a simple Add/Delete report.



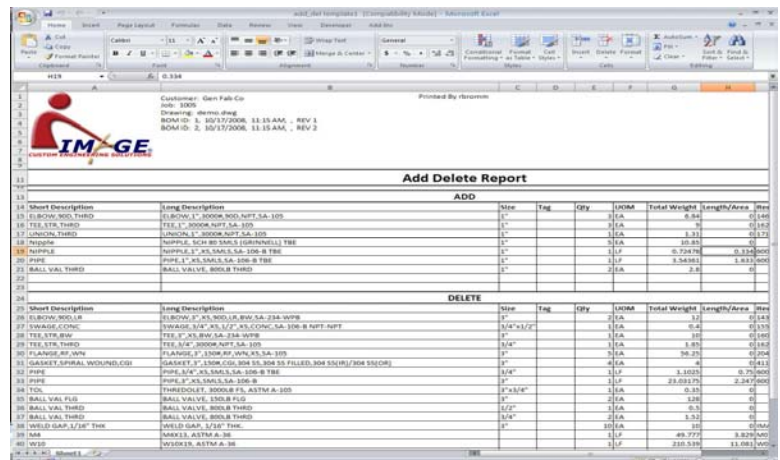
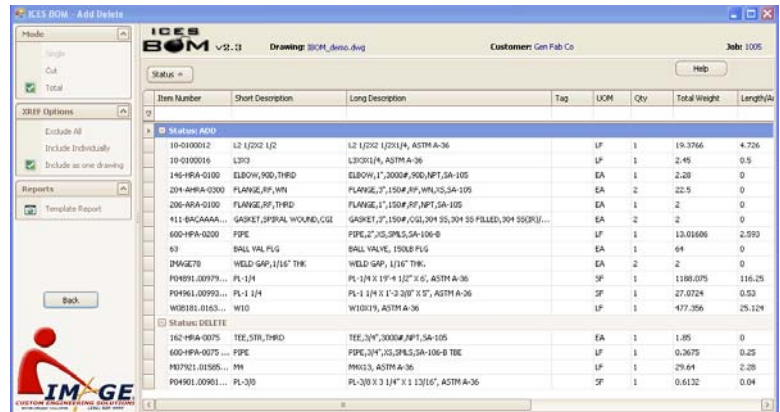
Snapshot

Within the CADWorx Plant environment, the user has two options for capturing BOMs. The "Quick BOM" command will automatically take a snapshot of all CADWorx entities in the model. "BOM Select" allows the user to select the items they wish to capture. In addition to BOM data, information such as user name, date, drawing path, customer and job number is included. The first time ICES BOM is used on a drawing, a "snapshot" file is automatically created. This file contains all of the snapshots for that drawing. There is no limit to the number of snapshots and using the CADWorx Live Database is not required.

Reporting

The reporting feature in ICES BOM has the ability to look at a single BOM snapshot or compare two different snapshots. This comparison is called an Add/Delete Report. Once you have browsed to the appropriate file, you are presented with a grid showing all of the different snapshots for that particular drawing. Selecting one will show you the Bill of Material for that snapshot while selecting two will give you an Add/Delete. You have the choice of Single, Cut, or Total.

Clicking the "Template Report" button will allow you to browse to a template Excel file to export your BOM or Add/Delete report. Using a template Excel file allows you to have a preformatted report with the columns you want in the order you want them. You can also include your company logo and header and border formatting. We have included a couple of example templates you can use to get you started.



Available in Three Editions

Reporter

Run BOM and Add/Delete reports from ICES BOM Snapshots.

Designer

Take CADWorx BOM Snapshots from within the AutoCAD environment. Includes Reporter.

Manager

Take CADWorx BOM Snapshots by browsing and selecting the drawing you want from Windows Explorer. With this option you do not need CADWorx or AutoCAD installed. Includes Designer.